



Erasmus+ mobility for studies a.y. 2022-2023



Orientation meeting (before applying) Erasmus+ mobility for studies a.y. 2022- 2023

International
Affairs



University
of Torino

Uni**TO-ERASMUS**

Partecipa alla Call 2022



Erasmus+ mobility for studies a.y. 2022-2023

International
Affairs



University
of Torino

Useful information and links available at:

www.unito.it

- **Internazionalità**
 - **Studiare e lavorare all'estero**
 - **Erasmus +**
 - **Erasmus per studio in uscita (outgoing)**



- ✓ Direct link: [Erasmus per studio](#)
- ✓ Sezione Mobilità e Didattica Internazionale: internationalexchange@unito.it
- ✓ Please contact us using your UniTO account: user@edu.unito.it



Orientation Meeting

1. The International Mobility Office will give you an overview of the **Erasmus+ Call 2022-2023** and related admin procedures;
2. If you have any doubts regarding the specific requirements of your School/Department you should contact the International Office of your «Polo». You can find the relevant email address here: [Tabella Corsi di Studio, Dipartimenti, Scuole - Bando Erasmus per studio 2022-2023](#);
3. Schools and Departments could also organize other meetings;
4. The [calendar of the meetings](#) is published here: [Erasmus per studio](#).



Who can apply?

The University of Torino guarantees equal treatment of men and women in the Erasmus+ for studies programme if they are regularly enrolled (including part-time) in a:

- undergraduate degree program;
- postgraduate degree program;
- 5/6 year postgraduate degree program;
- PhD, specialization course or continuing education program (specializing master).



Students who wish to spend a period abroad while studying for their degree at UniTO, considering that:

- the academic activities carried out at the Partner Institution will be fully recognized as part of your degree. Please read here for further details: [Guidelines for recognising study activities abroad](#);
- you will receive a grant to support you while abroad.



...But this is not all...

Erasmus mobility is (MOST OF ALL) a life experience for those who would like to:

- ✓ enjoy an international environment
- ✓ enrich their CV
- ✓ learn one or more foreign languages

Evidence shows that the Erasmus experience is associated with **an increase in cognitive cultural intelligence, transversal competencies and wish for an international career** (Deardoff, 2006).



International
Affairs



University
of Torino

Did you know that ..

80% of Erasmus + participants found a job within 3 months from getting their degree?

72% of them believe they found it thanks to this experience!!

Source:

Report by the European Commission
«**Study on the Impact for Erasmus+ Programme for High Education**» using data provided by 2 millions of participants



Life changing experiences by students

I have been positively impressed by how quickly and easily I have learnt Spanish, which I could not speak at all before leaving [...].
Emanuela, 21 years old,
Spain

I had the pleasure to host friends from different countries and backgrounds, we shared our meals and had a great time!
Giorgio, 22 years old,
Spain

I spent two nights at a monastery in the Carpathian Mountains with only a wood stove to keep us warm. We had to try our best to speak Romanian to communicate with the monks. An absolutely positive experience.
Sofia, 21 years, Romania



Erasmus+:



Fake newsreal data
I don't want to waste my time...	The average number of registered CFU is 32
I don't want to lower the average of my grades...	The average grade obtained by Erasmus students is 28
I don't have enough money to afford an Erasmus experience	If your ISEE (Household Income Indicator) is lower or equal to € 13.000,00 you can get up to €800 a month for mobilities to Programme Countries and up to €1150 for mobilities to Partner Countries



Who participates in the Erasmus+ programme?



Participation according to gender

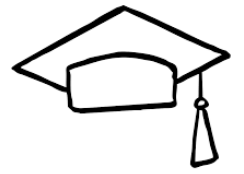
76% female
24% male

Participation according to study cycle

44% UG
37% PG
18% Laurea ciclo unico

Which are the favourite countries?

37% Spain
16% France
10% Portugal
8% Germany
7% Scandinavian Countries
5% Poland
5% United Kingdom
3% Greece
2% Hungary
7% Others



Source:
Analisi delle aspettative degli studenti prima del periodo di mobilità e della valutazione dell'esperienza ex-post
PhD Student: Valentina Dolce,
Studenti Erasmus Italiani (N = 115)
(COORTE 2016/2017 & 2017/2018)



Important background knowledge

Who founds the Erasmus+ Programme?

- ✓ European Commission
- ✓ Italian Ministry of University and Research
- ✓ University of Turin



Who manages the Erasmus+ Programme?

The local National Agencies are in charge of the actual management of the programme but the fundamental regulation comes from the European Commission



How is the Erasmus + Programme regulated?

The legal basis which defines the Erasmus+ Programme is a Regulation approved by the European Parliament and Council



New EU Regulation for the new Erasmus+ Programme 2021-2027



In May 2021 the new Erasmus + Programme 2021-2027 has been launched!

It contains a lot of novelties! More information can be found here:

[European Parliament and Council \(EU\) No. 2021/817 Regulation of 20 May 2021](#)

Individual Mobility for learning is part of the Erasmus+ 2021/2027 programme Action 1 and has the following main objectives:

1. **Inclusion and Diversity**
2. **Digital Transformation**
3. **Environment and fight against climate change**
4. **Participation in democratic life**



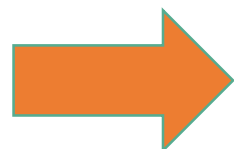
Where can I go?

Programme Countries including:

EU Member States, EEA countries (Iceland, Liechtenstein, Norway), the EU country accession candidates (Turkey, Serbia and the Republic of North Macedonia)

Partner Countries including:

all countries not part of the Programme Countries group.
NB **UK and Switzerland are in this group.**



Click on this link [Destinazioni attive per l'a.a. 2022/2023](#) to browse the destinations available for your Department/School!



Study in the UK

WARNING



International
Affairs



University
of Torino

From 1st October 2021 EU/EEA students will need a **passport to enter the UK** and won't be permitted to travel using an ID card.

Non UK/Irish passport-holders studying in UK for more than 6 months (i.e. a full academic year) must apply for a **Student visa**.

[Student visa - GOV.UK \(www.gov.uk\)](http://www.gov.uk)

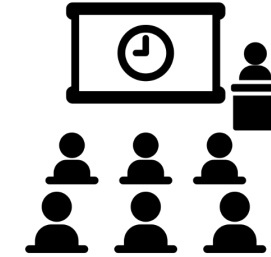
The current fee for a Student Visa is £348 plus an NHS health surcharge of £470 (total £818). This will provide the students with NHS access for the duration of their programme.

Non UK/Irish passport-holders studying in UK for less than 6 months (i.e. a single semester) will obtain a Standard Visitor visa. Many nationalities can receive this visa at the UK border, others will need to obtain it in advance of travel and this currently costs £95. This category of visa does not come with any NHS cover, therefore students are strongly recommended to purchase a private insurance.

[Standard Visitor visa - GOV.UK \(www.gov.uk\)](http://www.gov.uk)



Duration of the mobility period





- **Minimum duration of 2 months – maximum of 12 months**
- The duration of the mobility is set out in the bilateral Agreement
- **The mobility must be completed by: 30/09/2023 (also for departures in the 2nd semester!)**
- Early return is possible (**after the minimum duration of 60 days**)
- **An extension of the period is possible** (within the maximum eligible duration per study cycle)
- **Funding for the extended period is at the moment not guaranteed!**
- The duration of the mobility (including possible extension) **cannot exceed 12 months**
- Holiday breaks at the Host University do not count as the interruption of the mobility period.

NB: Erasmus SHORT MOBILITY only for PhD students (Art. 3 del Call)



Does and Donts during your Erasmus+ mobility

Donts	Dos
 <ul style="list-style-type: none">✗ You can't register exams at UniTO *✗ You can't graduate at UniTO <p>* Unless the EXCEPTIONAL MEASURES related to COVID-19 are extended to the a.y. 2022-23</p>	<ul style="list-style-type: none">✓ Attend courses and take exams✓ Thesis research✓ Do an internship, if part of your degree programme (<i>tirocinio curricolare</i>)✓ Courses + internship + thesis research (combined mobility) 
IMPORTANT: You MUST be enrolled at UniTO for the academic year 2022/2023	

Benefits of being an Erasmus+ student

Benefits at UniTO	Benefits at the Host University
<ul style="list-style-type: none">✓ Recognition of academic activities carried out abroad	<ul style="list-style-type: none">✓ Exemption from payment of University fees to host University (some Universities may charge additional administrative fees)✓ Extension of UniTO coverage for third party liability and accident insurance during the participation to academic activities abroad IT IS NOT A HEALTH INSURANCE!✓ Access to free services for students offered by partner University (e.g.: language courses, support in finding accommodation, tutoring).



Recognition of academic activities carried out abroad

- Academic activities abroad must be coherent with the study area of the bilateral agreement - **check with the partner University**.
- Full academic recognition by signing a **Learning Agreement** (study plan for your activities abroad)
- Before you start working on your Learning Agreement read this document carefully: [Guidelines for recognising study activities abroad](#)



If the Partner Institution does not approve your study plan for your activities abroad, they will not be recognised!

You have to verify well in advance the availability to validate traineeship or research activities.





Focus on Financial Support



Financial Support

Funding Institution:

- Agenzia Nazionale Erasmus+ (National Erasmus+ Agency)
- MIUR-Ministero dell'Istruzione, dell'Università e della Ricerca (Italian Ministry of Education, University and Research)
- University of Turin

COMPATIBLE with other scholarships and/or contributions from other funding bodies (e.g. MUR). However students must contact the relevant organisation themselves to verify this information.

INCOMPATIBLE with additional EU funds available for the same purpose, i.e. to support international mobility.

1. Financial Support «Long Mobility»

- **Part A:** Country contribution
- **Part B:** Extra funding based on household income
- **Part C:** Extra funding for special needs students

OR

2. Financial Support «Short Mobility»

- ONLY for mobilities in Programme Countries and ONLY for PhD students

+

3. Additional travel contribution (Only if applicable, see slides 26-27)

- "Standard" Travel Grant
- "Green" Travel Grant
- TOP UP Travel Green



1. Financial support: LONG MOBILITY – Part A

PART A - Country contribution	
Country of Destination	PART A – based on destination
<p><u>GROUP 1 - PROGRAMME COUNTRIES - HIGH cost of living:</u> Denmark, Finland, Iceland, Ireland, Liechtenstein, Luxembourg, Norway, Sweden. N.B. these include following Partner Countries: United Kingdom, Switzerland, Faroe Islands</p>	<p><i>€350.00 per month</i></p>
<p><u>GROUP 2 - PROGRAMME COUNTRIES - MEDIUM cost of living:</u> Austria, Belgium, Cyprus, France, Germany, Greece, Malta, Netherlands, Portugal, Spain.</p>	<p><i>€300.00 per month</i></p>
<p><u>GROUP 3 - PROGRAMME COUNTRIES - LOW cost of living:</u> Bulgaria, Croatia, Estonia, Hungary, Latvia, Lithuania, North Macedonia, Poland, Romania, Serbia, Slovakia, Slovenia, Turkey.</p>	<p><i>€250.00 per month</i></p>
<p><u>All Partner Countries</u> (except United Kingdom, Swiss Confederation, Faroe Islands Group 1)</p>	<p><i>€700.00 per month</i></p>
<p>PLEASE NOTE Students going to Switzerland on Mobility will not receive contribution in Part A if financed directly by the Swiss Government and in this case, the Host Universities will define methods and timing of mobility scholarships.</p>	<p>If, however, the Swiss Government does not grant mobility contributions for the a.y. 2022/2023, the University of Turin will pay a monthly contribution equal to the amount due for Group 1 countries.</p>



2. Financial support LONG MOBILITY – Part B



PART B – Extra funding based on household income

<p>Requirements based on household income and assets (ISEE)* - assessed before departure</p>	<p>ISEE indicator (ANNUAL HOUSEHOLD INCOME) must be between 0 € to a maximum of 50.000,00 €</p>
<p>Merit requirements - assessed after the mobility</p>	<p>You must meet at least one of the following criteria:</p> <ul style="list-style-type: none"> ✓ Recognition in your “carrieria” of at least 2 credits (CFU) per month (average) ✓ Recognition in your “carrieria” of at least 1 credit (CFU) for thesis research and/or internship ✓ Certified research and/or training activities for PhD students

*Your financial requirements will be assessed according to the 2020 ISEE and/or ISEE Parificato registered at UniTO Fee Office for the a.y. 2021/2022	Monthly Funding
ISEE ≤ 13.000 / studenti equiparati	€ 450,00
13.000 < ISEE ≤ 21.000	€ 400,00
21.000 < ISEE ≤ 26.000	€ 350,00
26.000 < ISEE ≤ 30.000	€ 300,00
30.000 < ISEE ≤ 40.000	€ 200,00
40.000 < ISEE ≤ 50.000	€ 150,00
ISEE > 50.000	€ 0,00



3. Financial support LONG MOBILITY – Part C

PART C - Extra EU funding for students with special needs

Funding Institution:	EU Commission
For whom	Students with special needs (disabilities or physical/mental conditions)
How to apply	We are awaiting details on how to apply by the Erasmus + National Agency and we will share them with you as soon as possible
Amount	Depending on eligible expenses actually incurred

More information here: www.unito.it - **Internazionalità - Studiare e lavorare all'estero - Erasmus+ - Erasmus+ per persone con disabilità/esigenze speciali**

You can contact us here: internationalexchange@unito.it



1. Financial support LONG MOBILITY – Summary

	Amount		Beneficiaries	Requirements
PART A	<ul style="list-style-type: none"> €250,00 or €350,00 according to the country of destinations within «Programme Countries» €700,00 a month for destinations within «Partner Countries» 		Students going to Switzerland on mobility will not receive contributions in Part A, if financed directly by the Swiss Government.	
PART B	ISEE	Monthly amount	Students with an ANNUAL HOUSEHOLD INCOME (ISEE/ISEE parificato) up to 50.000,00 euro + "studenti equiparati"	<p>You must meet at least one of the following criteria:</p> <ul style="list-style-type: none"> ✓ Recognition in your "carriera" of at least 2 credits (CFU) per month (average) ✓ Recognition in your "carriera" of at least 1 credit (CFU) for thesis research and/or internship ✓ Certified research and/or training activities for PhD students
	ISEE ≤ 13.000	€ 400		
	13.000 < ISEE ≤ 21.000	€ 400		
	21.000 < ISEE ≤ 26.000	€ 350		
	26.000 < ISEE ≤ 30.000	€ 300		
	30.000 < ISEE ≤ 40.000	€ 200		
40.000 < ISEE ≤ 50.000	€ 150			
PART C	Depending on eligible expenses actually incurred		Students with special needs (disabilities or physical/mental conditions)	Application will be filed according to National Agency indications



2. Financial support **SHORT MOBILITY**

- According to the Erasmus + Program 2021-2027, **PhD students** can carry out a **Short Mobility** in Programme Countries, with a **minimum eligible duration of 5 days** and up to **maximum of 30 days**
- More information on the financial support of Erasmus + for Studies **Short Mobility** and on the **application procedure** is available at art. 7.3 e 8.3 of Call
- On Thursday 16° December at 14:00: focus meeting for PhD students regarding **Short Mobility** and application procedure.

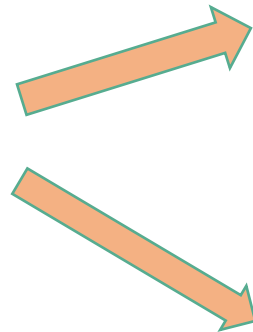


3. Erasmus+ Supplementary Travel Contribution

Students with fewer opportunities

TYPE 1: TRAVEL GRANT

- Erasmus LONG MOBILITY to PARTNER COUNTRIES excluding United Kingdom, Switzerland, Fær Øer Island;
- Erasmus SHORT MOBILITY to PROGRAMME COUNTRIES (only PhDs).



"Standard" Travel Grant

For those who use **standard means of transport** (e.g. flights) to reach their Erasmus destination

"Green" Travel Grant

For those who use **means of transport with low environmental impact** (e.g. train, car sharing, bus, etc.) in order to reach their Erasmus destination.

TYPE 2: TRAVEL GREEN TOP UP for students who DO NOT receive "TRAVEL GRANT" funds referred to in Type 1



Travel Green TOP UP is a travel fund for Erasmus Mobility for Studies a.y. 2022/2023 beneficiaries (students) who make an environmentally friendly journey to their destination and who DO NOT receive "TRAVEL GRANT" funds referred to in Type 1



3. Erasmus+ Supplementary Travel Contribution



TYPE 1: «Standard» Travel Grant

"Standard" Travel Grant

For those who use **standard means of transport (e.g. flights)** to reach their Erasmus destination

"STANDARD" TRAVEL GRANT Requirements and amounts

Beneficiary (students) requirements	Eligible types of mobility	Kilometre range	Standard Travel Grant amount
Erasmus a.y. 2022/2023 scholarship holders (students) with a household income (ISEE*) between 0 and value as defined by National Provisions for students with fewer opportunities (€23,626.32* in 2021).	<ul style="list-style-type: none"> Erasmus Long Mobility to Partner Countries (NOT: Switzerland, UK or the Faroe Islands) Erasmus Short Mobility to Programme Countries 	Between 10 and 99 KM	€23
		Between 100 and 499 KM	€180
		Between 500 and 1,999 KM	€275
		Between 2,000 and 2,999 KM	€360
		Between 3,000 and 3,999 KM	€530
		Between 4,000 and 7,999 KM	€820
		8000 KM or more	€1,500

*N.B. Check Art. n°7.4 of the Call for details regarding the household income indicator (ISEE)

3. Erasmus+ Supplementary Travel Contribution



TYPE 1: «Green» Travel Grant

«Green» Travel Grant

For those who use means of transport with **low environmental impact (e.g. train, car sharing, bus, etc.)** in order to reach their Erasmus destination.

Requirements and amounts "GREEN" TRAVEL GRANT			
Beneficiary (students) requirements	Eligible types of mobility	Kilometre range	Standard Travel Grant amount
Erasmus a.y. 2022/2023 scholarship holders (students) with: <ul style="list-style-type: none"> a household income (ISEE*) between 0 and value as defined by National Provisions for students with fewer opportunities (€23,626.32* in 2021); travel sustainably to reach their Erasmus destination; present proof of travel expenses 	<ul style="list-style-type: none"> Erasmus Long Mobility to Partner Countries (NOT: Switzerland, UK or the Faroe Islands) Erasmus Short Mobility to Programme Countries 	Between 100 and 499 KM	€210
		Between 500 and 1,999 KM	€320
		Between 2,000 and 2,999 KM	€410
		Between 3,000 and 3,999 KM	€610



3. Erasmus+ Supplementary Travel Contribution

TYPE 2: Travel Green TOP UP

Travel Green TOP UP is a travel fund for Erasmus Mobility for Studies a.y. 2022/2023 beneficiaries (students) who make an **environmentally friendly travel** to their destination and who DO NOT receive "TRAVEL GRANT" funds referred to in Type 1.

The **Travel Green TOP UP** fund is for travelling distances up to 4,000 km:

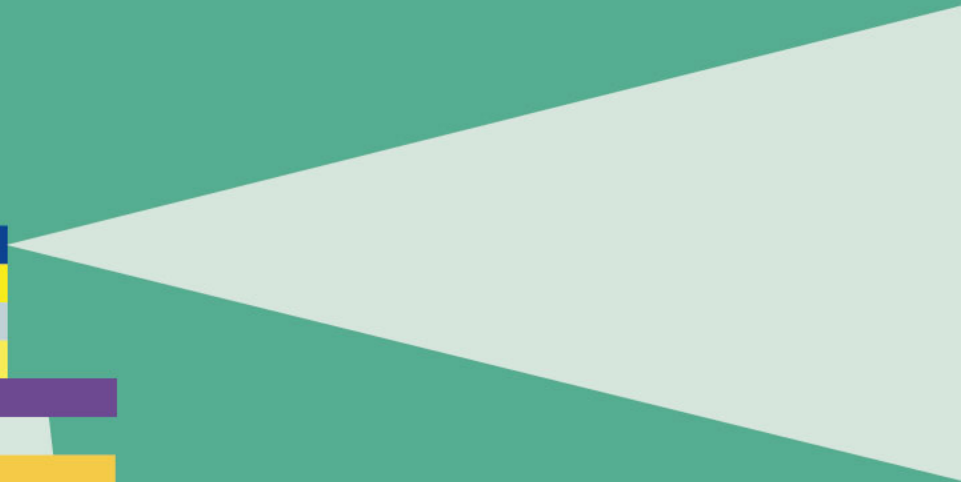
- travel fund of a **one-off payment** equal to €50,00;
- a **daily allowance depending on the monthly scholarship** (PART A/30 days + any PART B/30 days = daily amount due). This allowance is recognised for each day of **environmentally friendly travel** (in both directions) in order to reach the destination and for a maximum of 4 days.

It will be paid after presenting **supporting evidence** of the actual **environmentally friendly travel** and time needed to reach the destination.





Application



How to apply

- Each Degree Programme is associated to one or more Departments, one of which is the Main Department. You must apply according to the **Main Department under which your degree programme is offered**:
- Main Department is associated to a "School" : you can choose a destination amongst all the ones offered by the Departments associated to that School
 - Main Department IS NOT associated to any "School": you can only choose destinations offered by your Main Department

Check the Table **Corsi di Studio - Dipartimenti – Scuole** to verify under which Department your degree programme falls

Verify the available destinations under **Destinazioni Attive 2022/2023**



Destination (1/2)

For each destination verify carefully:

Field of study of the bilateral agreement (ISCED):

Your degree programme must match with the study field of the bilateral agreement

Study level during your mobility abroad (OUTGOING)

Academic offer at Host University

NOTE: further information/requirements you must to meet to be selected for that destination (*meta riservata, partenza primo semestre non garantita, etc.*)

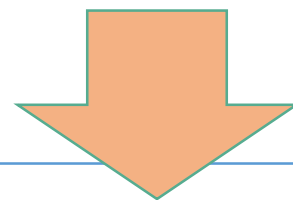
Additional requirements: language requirements set out by the Partner University to be admitted as an exchange student

Application Form (to be admitted at the Host Institution): verify the deadline and the documents you need to provide.



Destination (2/2)

You can select up to three destination choices (unless otherwise stated in the [Annex I](#)) listed in order of preference BUT....



- choosing two/three destinations is not compulsory;
- make sure to only apply for destinations that genuinely interest you. In fact, candidates can initially be placed on any of their selected destinations and not necessarily the first.

!!Attention: Graduation timeline!!
Students in year 3 of their undergraduate degree programme must apply for PG positions if they want to carry out their mobility during their first year of their postgraduate degree programme



Nomination and application

Host Universities define **DEADLINES** for the following procedures:

- *Nominations* of students selected to carry out an Erasmus+ mobility at their University
- *Applications* of those who have been nominated. The student is responsible for this process.



If these deadlines (above) come before the University of Turin's selection process finishes, departure in the 1st semester in a.y. 2022/2023 is **NOT** guaranteed and students should consider leaving in the 2nd semester, regardless of how many months were originally planned.

All candidate students should immediately check the nomination/application deadlines and the language requirements on the Host University website, especially if they are planning to start the mobility in the first semester.

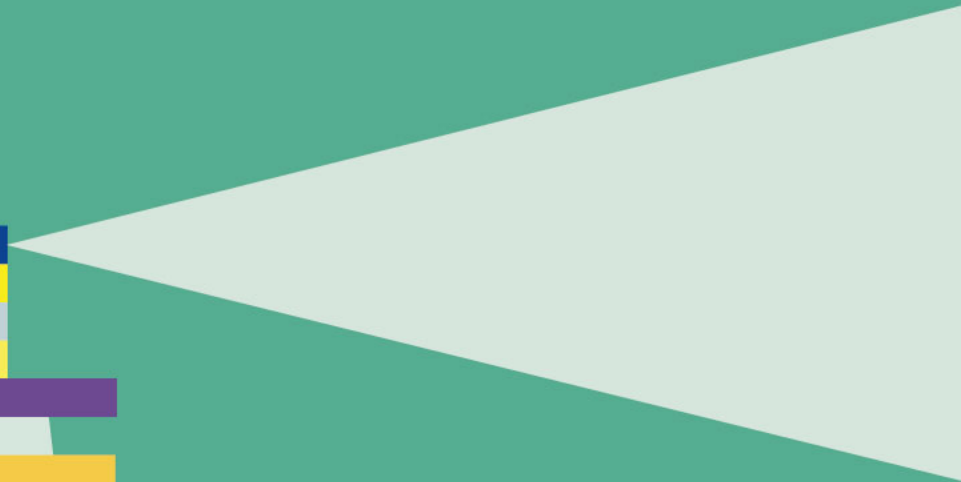
Based on information available when this Call was published, **PROGRAMME COUNTRIES** destinations, as well as Host Universities located in **UNITED KINGDOM and SWITZERLAND**, might have set early nomination deadlines. This information can be found at "[Destinazioni Attive 2022/2023](#)" in the field "Note", where the following comment can appear: "*Sulla base della scadenza Nomination prevista dall'Ateneo partner, l'avvio della mobilità nel primo semestre non è garantito.*"

Candidates going to **PARTNER COUNTRIES** destinations must check the nomination deadlines and application requirements on the Host University website and/or with the contacts in the PDF document "[Elenco Atenei Partner Countries](#)" which will be available on the page [Bando Erasmus per studio](#).





Selection criteria, scores and eligibility



How is your total score calculated (1/2)

TOTAL SCORE: max 100

A. Academic merit: it will assess the student's profile recorded on 31/10/2021 – **max 70 points:**

A1) Weighted average of grades: **max 35 points**

A2) Number of credits recorded: **max 35 points**

B. Additional score max 30 points:

B) It will be awarded in compliance with the indications given by each School/Department in [Annex I](#) to this call: **max 30 points**

Should there be more students of equal merit, priority will be given to the one who has been enrolled at UniTO the longest (not considering students behind with their exams – “fuori corso”) and eventually, to the youngest candidate.



How is your total score calculated (2/2)

STUDENTS TYPES			
Type 1	Type 2	Type 3	Type 4
Continuing students (i.e. students enrolled at 2nd, 3rd etc.. year) of any study cycle	Students enrolled at Year 1 of a postgraduate degree program or PhD course (laurea magistrale or dottorato)	Students enrolled at Year 1 of a postgraduate degree program or PhD course (laurea magistrale or dottorato) with international qualifications	Students enrolled at Year 1 of a undergraduate or a 5/6 years postgraduate degree program (laurea triennale o corso di laurea magistrale a ciclo unico)
Your merit score (A) will be calculated according the grades registered on your «carriera» by 31/10/2021 .	Your merit score will be calculated on the final graduation score of your previous degree up to a maximum of 70 points.	Score will be A=70 regardless of the final graduation score («voto di laurea») obtained.	Score will be A=0 However, the Commissions might award an additional score up to a maximum of 100 points for this type of student.



Rankings and results (1/3)

SELECTION of CANDIDATES	
<p>Phase 1 Temporary ranking list</p> <p>From around 25th February 2022</p>	<p>Students are allocated to a destination in descending order of score, taking into account, if possible, their preferences.</p> <p>VERIFY YOUR SCORE on your MyUniTO profile</p> <p>Do not accept the destination at this stage!</p>
<p>Phase 2 Requests for review</p>	<p>Should the student find any anomalies in the outcome of their application, they can submit a request for it to be reviewed, although it has to be justified.</p> <p>Students can only apply for a review for one or both of the following reasons:</p> <ul style="list-style-type: none"> • incorrect attribution of additional score; • incorrect exclusion. <p>Requests have to be submitted (Google Form) within 3 calendar days from the publishing of the temporary ranking list</p>
<p>Phase 3 First final ranking</p> <p>Around 9th March 2022</p>	<p>Students are assigned their destinations in descending order of score and taking their application preferences into account as much as possible.</p>
<p>Phase 4 Accepting/refusing the mobility</p>	<p>Students must accept or refuse the Erasmus destination which they have been selected for within 5 calendar days from the publishing of the list.</p> <p>Students will not be offered other destinations if they reject their offer and will lose all right to Erasmus+ Mobility for study 2022/2023.</p>



Rankings and results (2/3)

SELECTION of CANDIDATES	
Phase 5 Reallocating students	<p>After Phase 4, eligible students not yet assigned will be transferred to destinations with places made available by students refusing or failing to accept their destination. Those who still don't have a position could be assigned a place in destinations left vacant following the Evaluation Committee procedures.</p> <p>Reallocating students can be done by a public Call or an official assignment in two different ways: (see Allegato I/Annex 1):</p> <p>A. Reallocating by single ranking: Eligible candidates are placed in a single ranking based on their highest score and destinations available are assigned in descending order of score (see Annex I).</p> <p>B. Reallocation by language (English, French, German, Portuguese, Spanish and any other languages, if in Annex I): Different rankings are drawn up based on languages related to students' preferences. Candidates are ranked in every language area matching their chosen destinations. Only the language related to students' first choices will be initially considered for the reallocation by language. Any further available place will be allocated to candidates based on their second and, subsequently, third choices.</p> <p>During this phase students can be assigned to any destination with available slots and not necessarily to the destinations selected in their application</p>
Phase 6 Publication of second ranking (so-called ultimate ranking) Around 30th April 2022	<p>Once Phase 5 has been concluded, the second ranking (so-called ultimate ranking).</p>
Phase 7 Accepting/refusing the mobility	<p>Students must accept or refuse the Erasmus destination which they have been selected for within 5 calendar days from the publishing of the list.</p> <p>Students will not be offered other destinations if they reject their offer and will lose all right to Erasmus+ Mobility for study 2022/2023.</p>

Rankings and results (3/3)

SELECTION of CANDIDATES

You can verify your score on your personal page on MyUnito selecting "*Bandi mobilità internazionale*".
from the menu "*Iscrizioni*"

For each selected destination your status could be:

«Stato Assegnato»	You have been selected for this destination!
«Stato Escluso»	You have been excluded from this destination
«Stato Iscritto»	You fulfilled the requirements for this destination but someone with a higher score has been assigned to it, you could possibly be allocated to this destination if the winner does not accept the mobility (see Phase 5) .





Deadlines and documents



The application procedure is available here: MyUnito – Iscrizioni – Bandi di mobilità internazionale

The deadline for applications is Friday 21st January 2022 at 1.00pm.
Applications CANNOT be edited after this deadline.

ALERT!

- ✓ The application is submitted ONLY after you produce the final PDF file named «ricevuta iscrizione al bando» (receipt of application)
- ✓ The application as “bozza” (draft) is not valid!
- ✓ Once you’ve submitted your application you cannot make changes!
- ✓ Keep a copy of the application receipt
- ✓ Instructions on how to fill in the application
- ✓ Monitoring of online application procedure: 9-16 h on week days (except for Christmas Holidays)

For technical difficulties please contact internationalexchange@unito.it



ANNEX - «Allegati» I – II – III

Annex I - «Allegato I»:

Specific requirements set out by each School/Department (*struttura didattica*) on:

- what to include in your application
- selection criteria
- other requirements specific to each Department etc...

For questions related to this part of the Call: contact your School/Department (struttura didattica) using the email address of the International Office of your "Polo"

Verify here which is the correct one for your degree course: [Tabella afferenze Poli – Scuole – Dipartimenti – Corsi di Studio](#). You can also contact the [Departmental Coordinators for International Mobility](#).

Annex II – «Allegato II»:

It is about special policies related to the COVID 19 emergency and put into place by the European Commission during the year 2020. As of today they are not confirmed for the a.y. 2022/2023.

Annex III – «Allegato III»:

Data Protection Regulation





**Thank you for your
attention!**

